

What is a Smart City?



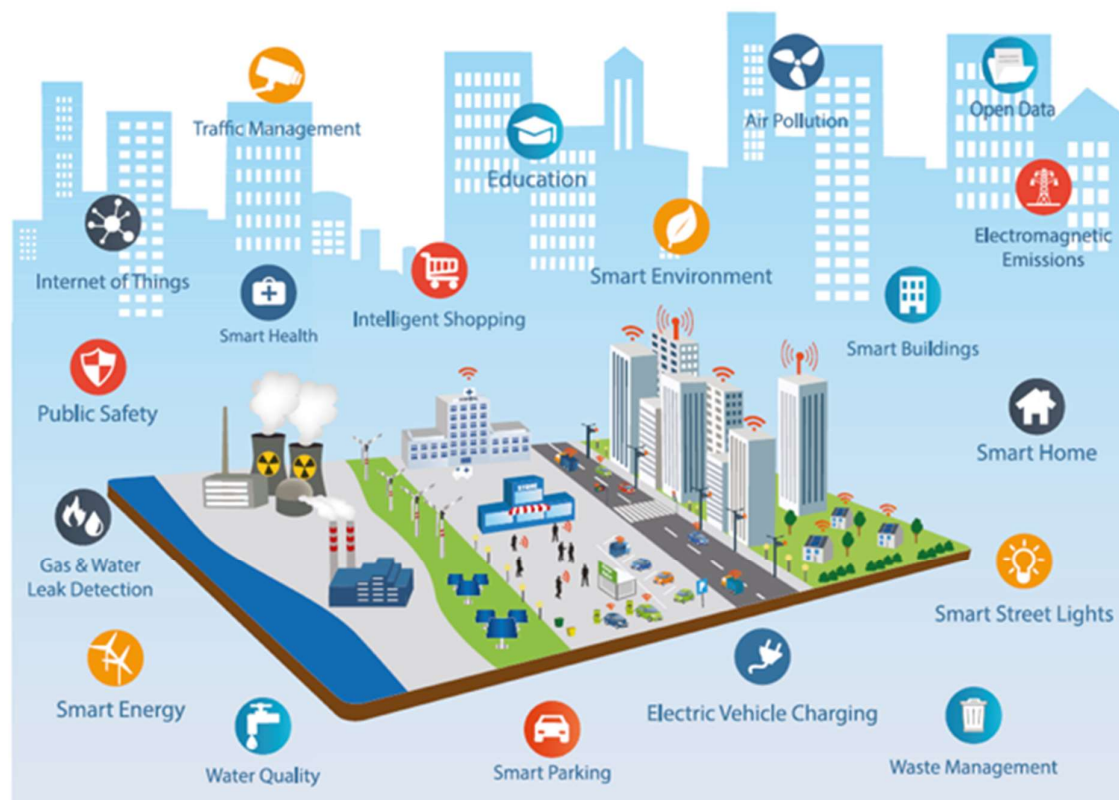
A city that applies digital technology, data and innovative practices to improve liveability, sustainability, collaboration and economic opportunities. They develop systems that support collaboration and innovation both within Council and throughout their community to enhance outcomes for the city.

Smart cities integrate digital dimensions into service delivery to enhance Council's ability to efficiently and effectively deliver high-quality outcomes to our community. It puts people at the centre, meaning that digital technology will not be deployed for its own sake, but for community-focused benefit.

Smart city opportunities are extensive, and a successful smart city requires direction and leadership from both Council and the community.

In collaboration with the community and key stakeholders, the City of Glen Eira is developing a Smart City Roadmap that will prioritise our investment in technologies and deliver better service outcomes for the community.

A VISUALISATION OF HOW SMART TECHNOLOGY AND PROCESSES CAN IMPACT A DIVERSE RANGE OF CITY SERVICES



Source : Adobe Stock

Alternative Smart City Definitions.

The City of Glen Eira defines a smart city as above, however, there are a range of other definitions and perspectives that can be considered. No definition is right or wrong but may focus or emphasise different aspects and elements to varying extents.

Smart Cities: Introducing Innovation to Smart Cities <i>by Jonas Böhm, Maximilian Palmié, and Oliver Gassmann</i>	<i>“A smart city systematically applies digital technologies to reduce resource input, improve its people’s quality of life, and increase the competitiveness of the regional economy in a sustainable manner. It entails the use of intelligent solutions for infrastructure, energy, housing, mobility, services, and security, based on integrated sensor technology, connectivity, data analytics, and independently functional value-added processes.”</i>
Parliament of Australia	<i>“Smart cities are those which leverage innovative technologies to enhance the quality and performance of urban services, to reduce costs and resource consumption, and to engage more effectively and actively with its citizens.”</i>

Why Smart Cities?

Global Smart City Drivers

Global trends indicate that there is a change in the way communities are interacting with their local environment. These changes are seeing a move towards smart and innovative technologies to address new and existing challenges and expectations. Some of the global trends driving a focus towards smart cities include:



Rapid Urbanisation & Demographic Shifts

Smart technologies can help Glen Eira to better plan and communicate with our community. They support the delivery of more efficient, effective and targeted services. Programs cultivating digital skills and innovation capabilities can support digital inclusion and accessibility.



Advances in Technology, Big Data, & Internet of Things

A smarter Glen Eira can support safe and secure data sharing and communication to encourage transparency and increase efficiency in decision-making. Additionally it can promote innovative thinking in the community.



Responding to Climate Changes

Technology solutions can improve our ability to monitor and manage environmental impacts. They can also help the City become more resilient and flexible when responding to environmental challenges and disasters.



Changing Mobility

Smart technology can support Glen Eira in managing and enhancing mobility issues and opportunities. Innovative approaches can support alternative solutions such as active travel, micro-mobility, autonomous vehicles, and on-demand transport.



Innovative Workspaces & Economy

Exploring enhanced connectivity, Glen Eira can support the evolving economy, empower remote working and enable the community to tap into global markets and supply chains.