

MURRUMBEENA PARK MURRUMBEENA MASTER PLAN

SEPTEMBER 2019



The *Murrumbeena Park Master Plan* has been prepared for Glen Eira City Council by ACLA Consultants.



Table of Contents

Chapter 1: Background	4	Chapter 4: Master Plan	20
Introduction	5	Key Objectives for Master Plan	21
Project Method	6	Master Plan Overview Summary	22
Background Information Review	7	Master Plan Goals/Actions	24
Chapter 2: Analysis and Consultation	10	• Objective 1: Upgrade sporting infrastructure and facilities	24
Context Overview	11	• Objective 2: Improve access and safety	26
Site Inventory	12	• Objective 3: Enhance community and social amenities	28
Site Analysis	13	• Objective 4: Incorporate environmental sustainable design measures	30
• Community Infrastructure and Social Amenities	13	• Objective 5: Establish a well maintained reserve	32
• Access and Safety	13	Chapter 5: Appendices	34
• Car Parking	14	Appendix 1: Review of Relevant Plans, Policies and Strategies	35
• Environment and Landscape	14		
• Sporting Infrastructure and Facilities	15		
• Park Furniture and Maintenance	15		
Chapter 3: Murrumbeena Community Hub Option	16		
Community Hub Site Plan	17		
Community Hub - Ground Floor Plan	18		
Community Hub - First Floor Plan	19		



Murrumbeena Park existing playground. Image: Steven Pam.

Chapter 1: Background

Introduction

Overview

Established in 1912, Murrumbeena Park attracts a wide range of users by catering for both passive and active recreation. As the population in Murrumbeena is forecast to rise by 7.72% between 2019 and 2036, Murrumbeena Park will continue to be valued as public open space well into the future.

Popular features of the park are walking paths, dog off-leash areas, sporting facilities and the playground upgraded in 2012. Additionally the Murrumbeena Bowls Club occupies the north west section of the site adjacent to the boulevard of Canary Island Palms.

Murrumbeena Park has a sporting character with the majority of space serving local sporting clubs and organised sport. The regional playspace, surrounding open space areas and established trees provide balance to the sporting use.

Site Location

Murrumbeena Park represents 5.34ha of public open space in the suburb of Murrumbeena approximately 13km from Melbourne’s CBD. The park is well established in the neighbourhood and is extensively used by local residents as well as the broader community.

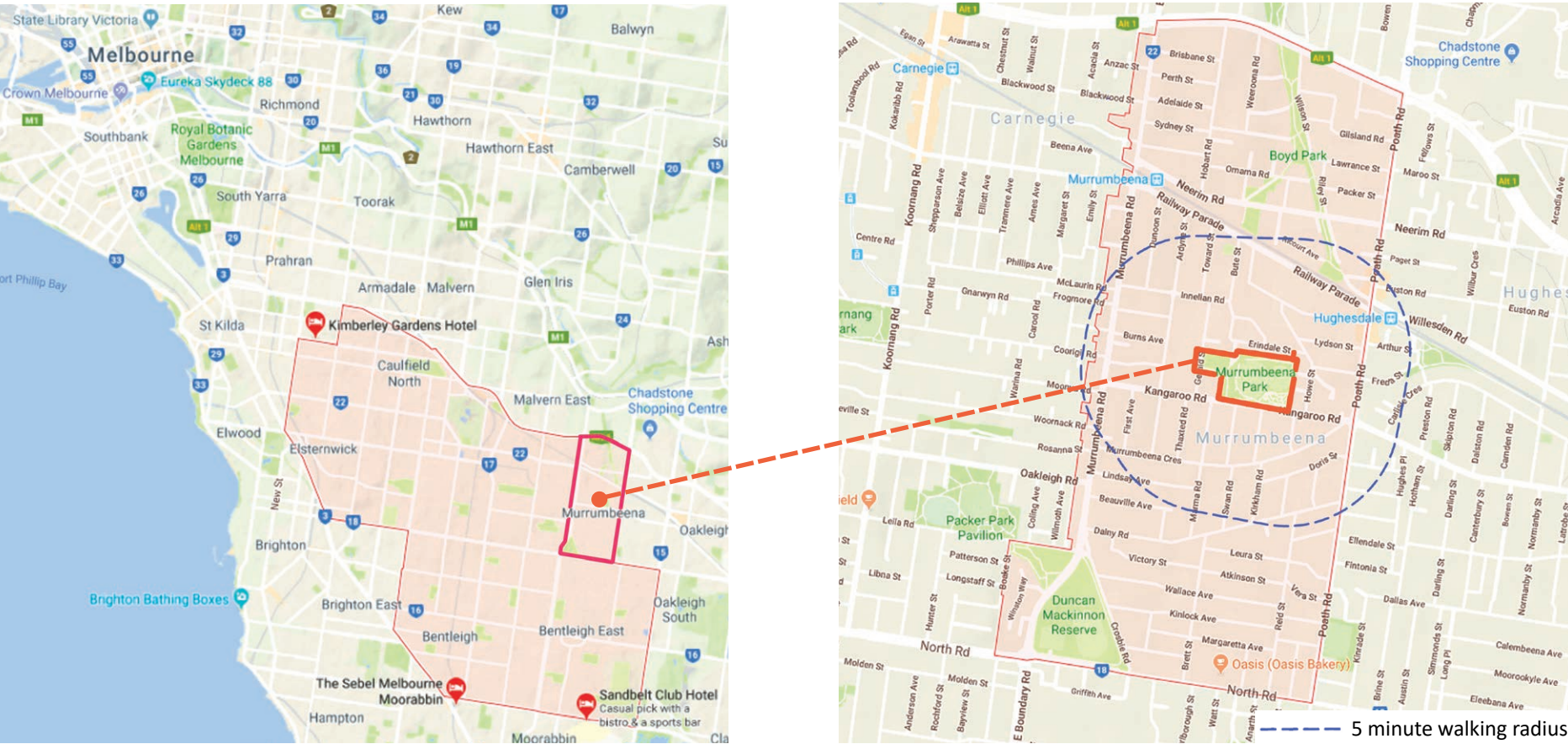
The park is accessible by foot from Kangaroo Road, Bute Street, Gerald Street and Erindale Street and is within a five minute walking distance from Murrumbeena and Hughesdale train stations.

Master Plan Aims

The *Murrumbeena Park Master Plan 2002* resulted in the upgrade and implementation of a number of projects including the sports ovals, dog off-leash areas, regional playground, public toilets, park furniture and shade elements.

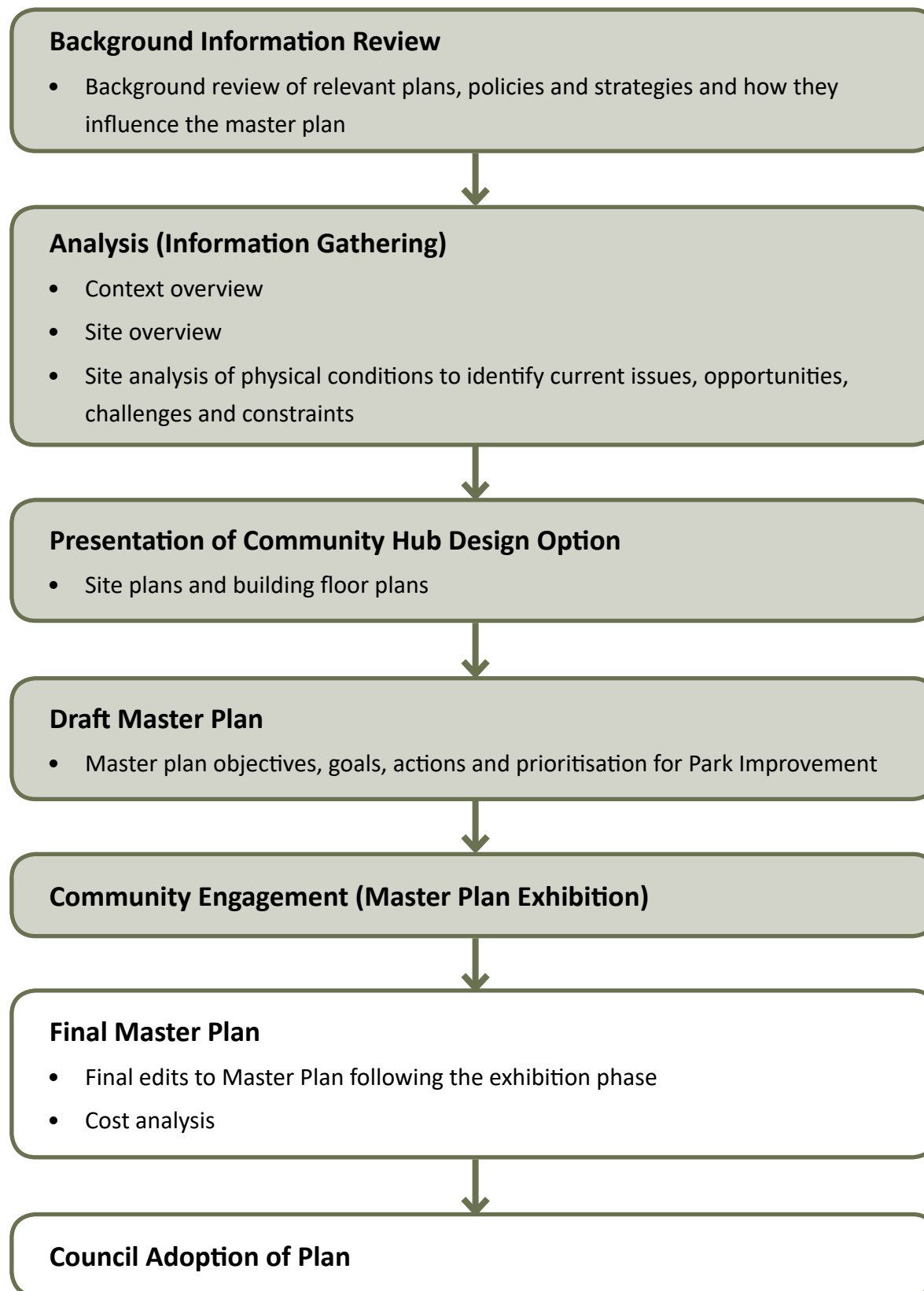
The aim of this master plan is to revisit the site and provide an integrated, sustainable and community orientated vision for the park based on current day and future needs and expectations. The master plan will also review the location and functionality of current facilities, while protecting the existing qualities that the community value.

The importance of the master plan is heightened by the allocation of \$2 million by the State Government and \$4 million by the Federal Government in partnership with Council to construct one of the biggest multi-purpose community hub/sports pavilions in the region as announced in April 2018.



The master plan will endeavour to:

- Enhance the functionality of existing uses to accommodate increased visitation numbers and public use;
- Create an inclusive, accessible reserve that supports and encourages use by people of all ages and abilities;
- Promote and provision for community events and celebrations that encourage all age groups to participate;
- Recommend necessary improvements to the reserve to achieve a high quality landscape setting and promote environmental sustainability through ecological improvement;
- Inform future capital works as staged or stand-alone projects within achievable Council budget parameters or with State Government funding for regional facilities; and
- Promote community safety by applying and adhering to Crime Prevention Through Environmental Design (CPTED) principles.



Happy dogs at Murrumbeena Park. Image: ACLA.

Council Strategies and Plans

A number of existing strategic planning documents, policies and strategies have influenced the *Murrumbeena Park Master Plan*. These have been reviewed and key directions relevant to the reserve are highlighted in the following table. Full summaries are available in Appendix 1 (Chapter 5).

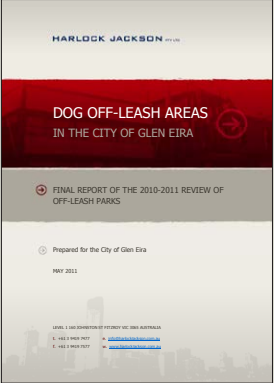
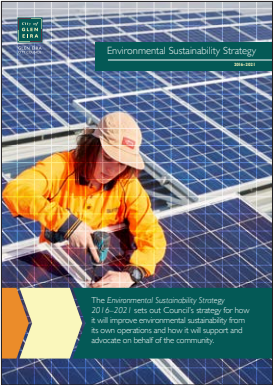
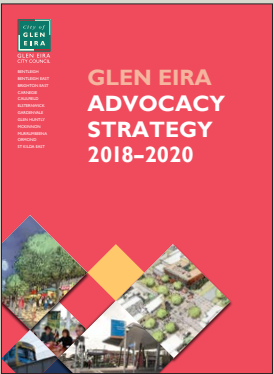
The documents reviewed are as follows:

Glen Eira City Council



- *A Walking Community 2014-2017*
- *Community Sport - Management of Grounds Policy 2013*
- *Disability Action Plan 2017-2021*
- *Dog Off-Leash Areas Final Report 2011*
- *Environmental Sustainability Strategy 2016-2021*
- *Glen Eira Advocacy Strategy 2018-2020*
- *Glen Eira Bicycle Strategy 2010*
- *Glen Eira Council and Community Plan 2018-2019*
- *Integrated Transport Strategy 2018-2031*
- *Murrumbeena Park Community Hub Vision Flyer*
- *Open Space Strategy 2014*
- *Pavilion Redevelopment Strategy 2017*

PLANNING DOCUMENT	KEY OUTCOMES AND IMPLICATIONS FOR MURRUMBEENA PARK
<i>A Walking Community 2014-2017</i> 	Council identifies the need for: <ul style="list-style-type: none">• An improved road crossing at the south-eastern corner of Murrumbeena Park on Kangaroo Road;• The development of walking routes;• A reduction of barriers caused by main roads;• Improved pedestrian wayfinding;• Improved pedestrian safety on shared paths;• The promotion of Crime Prevention Through Environmental Design (CPTED); and• Improved pedestrian safety in the vicinity of parks/reserves.
<i>Community Sport - Management of Grounds Policy 2013</i> 	<ul style="list-style-type: none">• New facilities will need to cater for equality of access. This is important in the context of the community hub and sports pavilion upgrade at Murrumbeena Park.
<i>Disability Action Plan 2017-2021</i> 	Council recognises the need for: <ul style="list-style-type: none">• More opportunities for social connections, involvement and inclusions;• Accessible buildings, shops, facilities, amenities and transport; and• More designated accessible parking and better monitoring of designated accessible parking.

Background Information Review

PLANNING DOCUMENT	KEY OUTCOMES AND IMPLICATIONS FOR MURRUMBEENA PARK
<p><i>Dog Off-Leash Areas Final Report 2011</i></p> 	<ul style="list-style-type: none"> The delivery of increased signage, education and enforcement of proper dog-owner behaviour.
<p><i>Environmental Sustainability Strategy 2016-2021</i></p> 	<p>Council recommends:</p> <ul style="list-style-type: none"> Adaptation of Council managed open space, infrastructure and services over time to cope with climate change; Reduced use of new material in Council operations; Protection and enhancement of biodiversity and environmental heritage on Council managed land; Increased efficiency of Council's water use; Increased capturing and treatment of rainwater and stormwater for use in parks and buildings; and Ability for green infrastructure to survive drought.
<p><i>Glen Eira Advocacy Strategy 2018-2020</i></p> 	<ul style="list-style-type: none"> The redevelopment of Murrumbeena Park is to include a new multi-use pavilion, improved walkability connections to transport, shops and local schools, and a new larger circuit walk within the park.

PLANNING DOCUMENT	KEY OUTCOMES AND IMPLICATIONS FOR MURRUMBEENA PARK
<p><i>Glen Eira Bicycle Strategy 2010 (Currently being updated)</i></p> 	<p>Council recommends that:</p> <ul style="list-style-type: none"> The construction of concrete off-road paths intended to be shared by pedestrians and cyclists are to be at least 2.5m wide with adequate path symbols and signage. Installation and upgrade of bike parking facilities.
<p><i>Glen Eira Council and Community Plan 2018-2019</i></p> 	<p>Council commits to:</p> <ul style="list-style-type: none"> Open space projects, sustainable building measures and the protection of valued trees; The construction of new footpaths; and The implementation of all-abilities access across the municipality. <p>Additionally to 2018-2019 commitments, the Glen Eira Council and Community Plan 2017-2021 commits to a refreshed Murrumbeena Park Master Plan in 2019/2020.</p>

PLANNING DOCUMENT	KEY OUTCOMES AND IMPLICATIONS FOR MURRUMBEENA PARK
<p><i>Integrated Transport Strategy</i> <i>2018-2031</i></p> 	<p>Council will:</p> <ul style="list-style-type: none">• Strive for child friendly neighbourhoods that are connected to a network of vibrant and well-designed walkable activity centres; and• Audit and improved bike parking facilities in key destinations including parks.
<p><i>Murrumbeena Park Community Hub</i> <i>Vision Flyer</i></p> 	<p>Council's vision includes:</p> <ul style="list-style-type: none">• A multipurpose community hub;• Opportunities for events;• Festivals and community gatherings;• Improved walkability and connections;• Enhanced local streetscapes;• A multi-purpose sports area; and• Connected pathways around the park.

PLANNING DOCUMENT	KEY OUTCOMES AND IMPLICATIONS FOR MURRUMBEENA PARK
<p><i>Open Space Strategy 2014</i></p> 	<ul style="list-style-type: none">• Murrumbeena Park is identified to be a municipal open space type.• Municipal open space types are recommended to include major/minor festival events, shared paths, skate/BMX facilities, large canopy trees, water features/wetlands, WSUD infrastructure and a sustainable water supply, however all these are not entirely suited for Murrumbeena Park.• Murrumbeena Park is most popularly visited for walking, dog walking, playground use, dog off-leash areas and exercising.
<p><i>Pavilion Redevelopment Strategy</i> <i>2017</i></p> 	<p>Murrumbeena Park pavilion should include:</p> <ul style="list-style-type: none">• The ability to cater for community groups and casual users;• Opportunity to integrate and support external uses in open space;• Complementary commercial activities; and• Partnerships with educational or other government agencies.



Murrumbeena Park existing playground and boundary planting along Kangaroo Road. Image: ACLA.

Chapter 2: Analysis and Consultation

Context Overview



SITE FEATURES

- | | |
|---|--|
| 1 Murrumbeena Park | 11 Murrumbeena Shopping Village |
| 2 New Murrumbeena Train Station | 12 Arcare Carnegie Aged Care Facility |
| 3 New Hughesdale Train Station | 13 St Michaels Aged Care Facility |
| 4 Elevated Cranbourne and Pakenham Train Line | 14 Brimlea Aged Care |
| 5 Boyd Park | 15 Murrumbeena Children's Care |
| 6 Springthorpe Gardens | 16 Highesdale Kindergarten |
| 7 Riley Reserve | 17 Hughesdale Seventh-Day Adventist Church |
| 8 New Linear Park | 18 Murrumbeena Uniting Church |
| 9 Murrumbeena Tennis Club | 19 Hughesdale Community Centre |
| 10 Galbally Reserve | |

LEGEND

- Project Boundary
- Public Open Space
- Elevated Train Station
- 624 Bus Route and Bus Stops
- 625 Bus Route and Bus Stops
- 767 Bus Route and Bus Stops
- 822 Bus Route and Bus Stops
- Existing On-Road Bike Lanes
- Proposed On-Road Bike Lanes



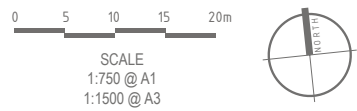
The purpose of the analysis is to identify observed issues and deficiencies with the park during site inspections.

The analysis covers a number of areas, which include:

- Community infrastructure and social amenities;
- Access and safety;
- Car parking;
- Environment and landscape;
- Sporting infrastructure and facilities; and
- Park furniture.

LEGEND

	Photo View		Low Black Chain Mesh Fencing
	Granitic Sand Paths		High Chain Mesh Fencing
	Internal Playground Paths		Low Pre-cast Kerb Vehicle Barrier
	Concrete Paths		Harsh Visual Edge/Lack of Screening
	Asphalt Paths with Brick Edging		Park Signs
	Asphalt Paths with Bluestone Edging		Entry Sign with Dog Litter Bags
	Pedestrian Entry		Light Poles
	Pedestrian Entry Gated		Sports Lights
	Vehicle Entry with Gates		Hanging Light Poles for Lawn Bowls
	Maintenance Entry		Drink Fountains
	Off-Street 90° Car Parking (Sealed)		Drink Fountain with Dog Bowls
	Off-Street 90° Car Parking (Accessible)		Steel Bollards
	Parallel Street Car Parking		Timber Bollards
	Angled Street Car Parking		Seats
	Number of Parking Spaces		Benches
	Number of Accessible Spaces		Barbecues
	Bus Stop with Shelter (Route 625)		Modern Barbecues
	Pedestrian and Vehicle Conflict Internal		Picnic Settings
	Pedestrian and Vehicle Conflict External		Flag Poles
	Pedestrian Desire Lines		Bins
	Pedestrian Movement External		Litter and Recycling Bins
	Restricted Streetscape Activation (Harsh Built Edge)		Bike Rails
	Ball Catch Nets		Gates
	Timber Fences		Basketball Ring and Backboard
	Timber Barriers		Coaches Boxes
	Low Chain Mesh Boundary Fencing		Shelters
			Post Box
			Goal Posts



Community Infrastructure and Social Amenities

The community infrastructure and social amenities at Murrumbeena Park are generally well used and well-maintained however would benefit from rationalisation and upgrading where appropriate.

The playspace is a popular attraction to the site including the designated dog off-leash areas in the south-west corner of the park and on the junior oval during non-club use. These spaces are new and intact with minimal improvements required. Walking and exercise could be improved through the introduction of a continuous circuit path and fitness equipment/stations at selective locations.

There are two public toilets, one of which is aged and non-DDA compliant. There are also two picnicking zones at the playspace and south-west corner of the park complete with shelters, picnic settings, benches, barbecues, bins and drink fountains. A gazebo is located adjacent to the cricket nets presumably to shelter teams during cricket matches and training. It is inconsistent with the suite of other shelter types at the park though functionally it serves its purpose.



Upgraded playground



Existing public toilet with limited accessibility



Existing shelter, barbecue and picnic settings

Access and Safety

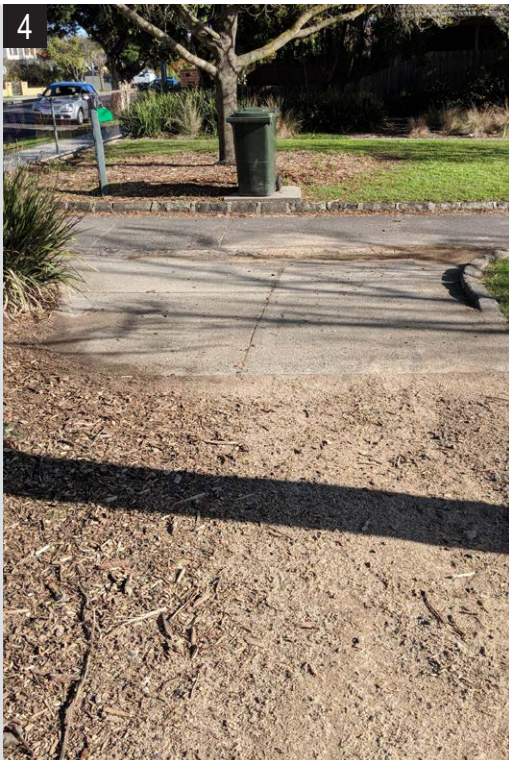
Pedestrian access is provided from Gerald Street, Bute Street, Erindale Street via a narrow laneway and Kangaroo Road, and whilst this distribution is adequate, much can be improved to address the aesthetic appeal of entrances and create a welcoming arrival experience.

On-site parking is provided north-west of the main sports oval accessed from Bute Street. Although the car park is located close to the sports pavilion and bowling club, it hinders pathway connectivity around this section of the park requiring pedestrians to navigate through the car park. This creates several potential conflict points between vehicles and pedestrians, particularly pedestrians entering the park from Bute Street.

Pathways are predominantly gravel, varying in width and generally insufficient to support a range of users, specifically those using mobility aids. A more consistent approach to path materiality and width is required.

Vehicle exclusion fencing range in style from low chain mesh fencing along Kangaroo Road, concrete kerb and plinth blocks along Bute Street and treated pine post and rail fencing along Gerald Street. The old chain mesh fence along Kangaroo Road near the playspace contains children, however the visual harshness of this fence could be softened with a more recessive type. The need for a fence along the entire length of Kangaroo Road is also debatable given stands of mature vegetation.

There is adequate pedestrian lighting along the asphalt path from Kangaroo Road to Gerald Street, albeit aged, but limited throughout the remainder of the park. Wayfinding signage is non-existent and could be implemented as part of a municipal-wide strategy.



Granitic sand path, concrete ramp and asphalt path



Cracked asphalt path

Car Parking

On-site parking provides 38 spaces inclusive of two accessible bays. The car park is inefficient and oddly shaped with wide aisles exceeding Australian Standard and faded linemarking. Accessible parking bays are also non-compliant.

On-street all-day parking exists along Kangaroo Road and Gerald Street, with Bute Street providing one-hour parking options for visitors. Kangaroo Road is a declared Vicroads' road. Any change in the configuration of traffic management along Kangaroo Road will require Vicroads approval.

The new Community Hub and Sports Club Pavilion will demand an increase supply in parking at this site with the quantity of spaces required subject to further investigation.



Asphalt carpark and worn line marking



Non-compliant accessible car spaces



Carpark disrupting circuit path

Environment and Landscape

The landscape character of the park predominantly comprises a mix of native and exotic tree species. Tree plantings are sparse and randomly arranged with exception to the Canary Island Palms south of the bowling green forming and strong avenue entrance at Gerald Street.

Understorey planting is limited, however where it does exist particularly along the western park boundary, it successfully veils nearby fences and residential dwellings. Further understorey planting is needed to improve the park experience, define spaces, increase biodiversity and screen undesirable views. The playspace landscape is maturing and considered high quality.

There are no obvious Environmental Sustainable Design initiatives within the park, primarily a factor of aging infrastructure and assets. However, with the proposed development of the Community Hub, initiatives such as stormwater quality improvement and harvesting for reuse, energy efficiency and sustainable building and landscape materials will need to be explored and implemented for green star accreditation or similar.



Feature palms with no boundary planting



Naturalistic playground



Harsh visual edge along eastern fenceline

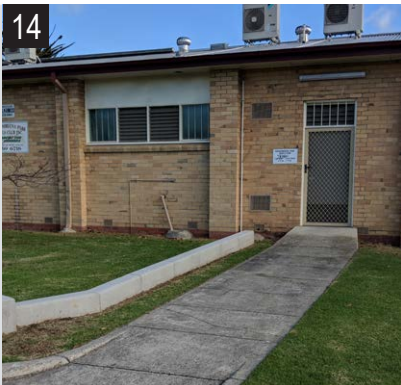
Sporting Infrastructure and Facilities

The main sport pavilion and community hall is home to the Murrumbeena Cricket Club, Murrumbeena Football Club, Murrumbeena Junior Football Club and Oakdale Angling Club. The pavilion inadequately addresses the growth of sporting clubs and the potential for the venue to become a multipurpose facility community hub. The Murrumbeena Bowls Club is located in a separate facility comprising a pavilion and two bowling greens containing eight rinks each. Both buildings would not achieve BCA and DDA compliance with standards today, coupled with inactive facades which fail to achieve passive surveillance opportunities of the park.

The cricket practice nets are in good condition located between the two ovals on the north side of the park. The basketball key is aged and undersized for smaller team games.

Development of a new multipurpose community hub at Murrumbeena Park, incorporating the existing sports pavilion tenants and new community uses, is currently underway. Funding for the new Community Hub has been secured from the State Government (\$2 million) and the Federal Government (\$4 million), with Council to contribute the balance. Sporting tenants at the park identified a range of issues to be considered in the design of the community hub and masterplan, including:

- A desire for the football club to remain as near to the main sports oval as possible within the pavilion;
- Female friendly facilities;
- Service delivery and access;
- Safe pedestrian access in and around the park;
- Opportunities for netball training on-site; and
- Adequate parking provision, particularly on game days



Pavilion terraced seating and function room Bowls club front entry and lawn.

Park Furniture and Maintenance

There is a mix of old and new furniture within the park comprising seats, bins, barbecues, shelters and bollards requiring a greater level of consistency in style and material finishes. Typical of this are the litter bins which comprise two types: lockable clamps and enclosures.

The supply of park furniture is adequate with most evenly distributed throughout the reserve. Ongoing maintenance of timber finishes (i.e. sanding and protected coatings) is required with some furniture displaying weathering and splintering in cases.

There is a lack of grouped seating arrangements which foster face to face interaction and gathering with most seats placed in isolated locations around the park.

Paving materials are adhoc. The park contains compacted gravel paths, concrete paving with obvious signs of patching and repair, asphalt paths with bluestone edging and asphalt paths with red brick edging. A more uniform approach consistent with all-weather pathways used in other Council reserves is required.



Irregular and damaged bollards at the pavilion Worn timber seating Older style barbecue in picnic area

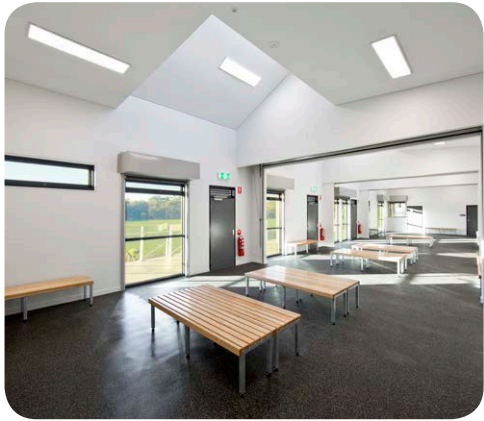


Murrumbeena Park existing pavilion. Image: ACLA.

Chapter 3: MURRUMBEENA COMMUNITY HUB OPTION



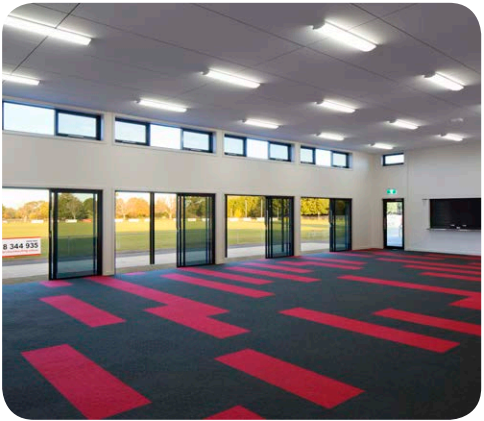
Example of a potential pavilion entry.
Architect: Architecture Matters Pty Ltd
Photographer: Christopher Alexander Photography



Example of potential changing rooms.
Architect: Architecture Matters Pty Ltd
Photographer: Christopher Alexander Photography



Example of potential meeting room
Caulfield Park pavilion

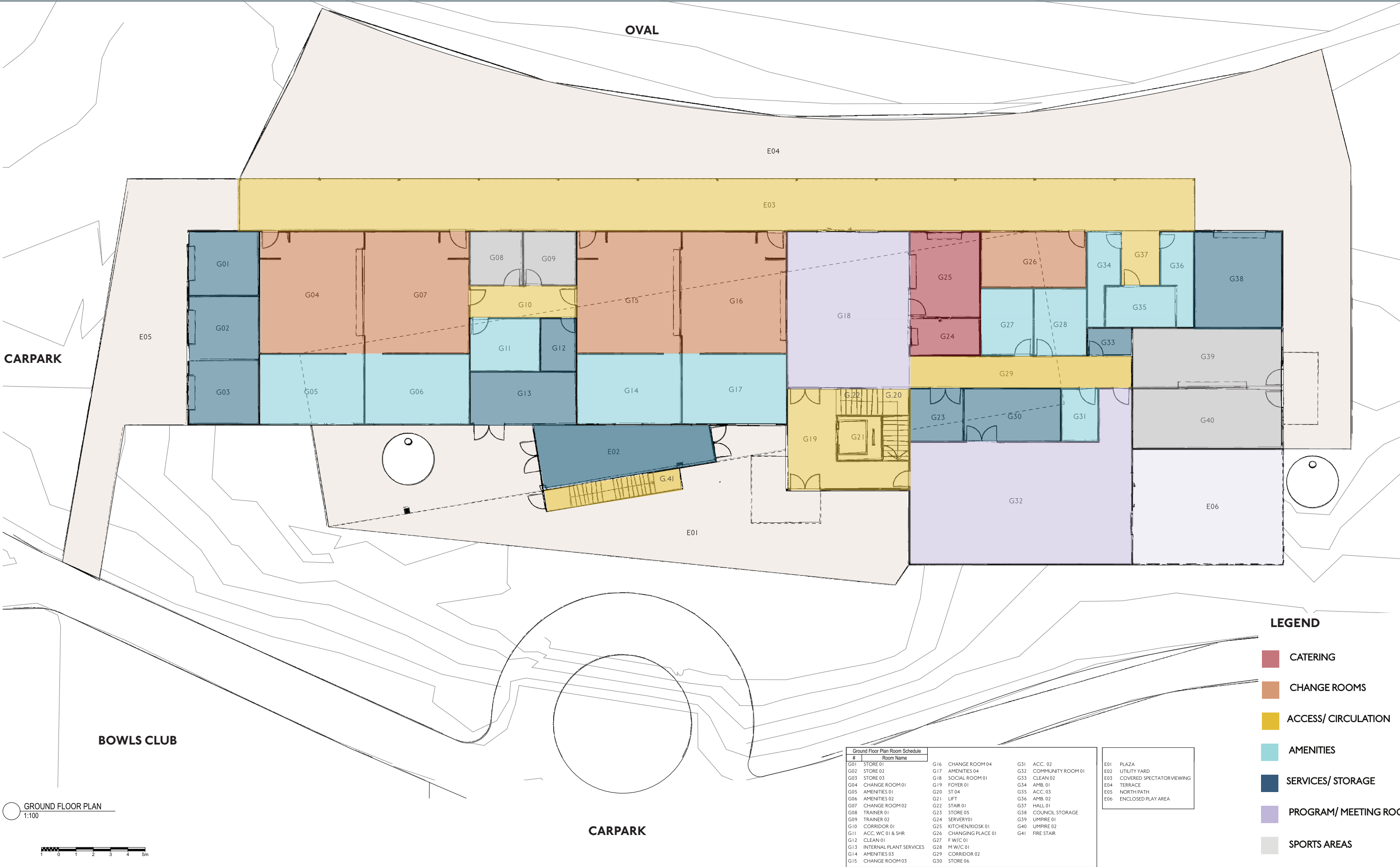


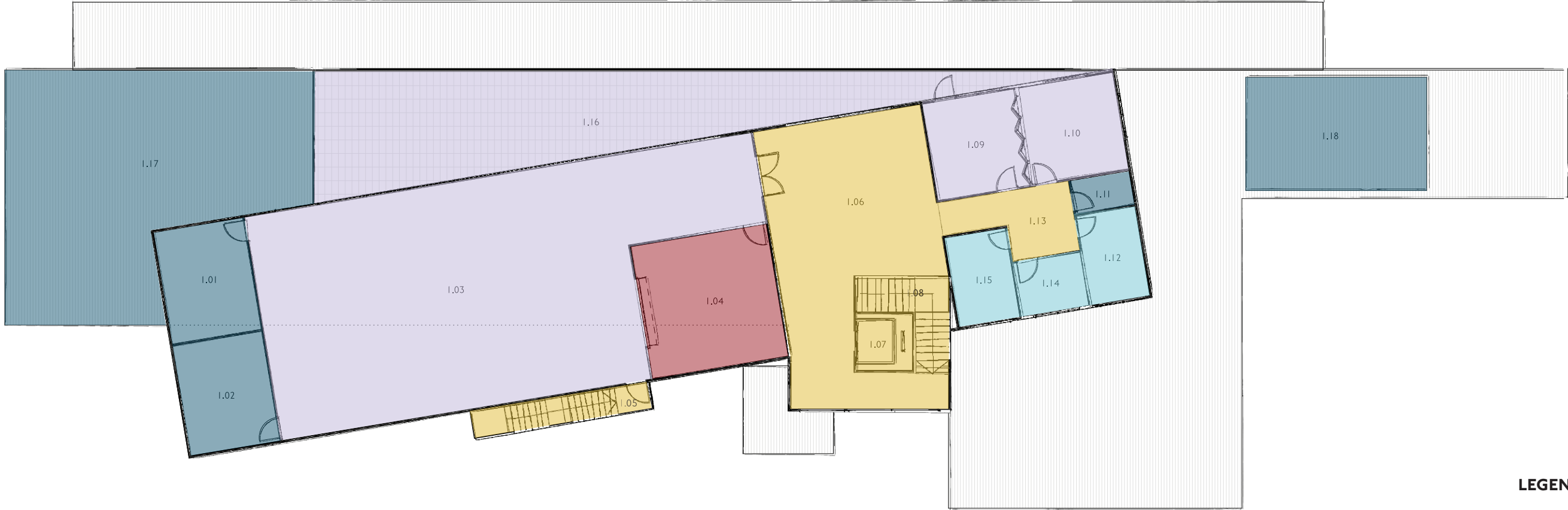
Example of a potential circulation area
Architect: Architecture Matters Pty Ltd
Photographer: Christopher Alexander Photography



Example of potential social room.
Duncan McKinnon Reserve pavilion

Community Hub - Ground Floor Plan





FIRST FLOOR PLAN
1:100

1 0 1 2 3 4 5m

First Floor Plan Room Schedule			
#	Room Name		
1.01	STORE 07	1.09	PROGRAM RM. 01
1.02	STORE 08	1.10	PROGRAM RM. 02
1.03	SOCIAL ROOM 02	1.11	CLEAN ST. 01
1.04	KITCHEN 01	1.12	FEMALE 02
1.05	FIRE STAIR	1.13	CORRIDOR 03
1.06	FOYER 02 / LOUNGE	1.14	ACC. WC 04
1.07	LIFT	1.15	MALE 02
1.08	STAIR 01	1.16	TERRACE 01
		1.17	P.V. ZONE 01
		1.18	ROOF PLANT 01

LEGEND

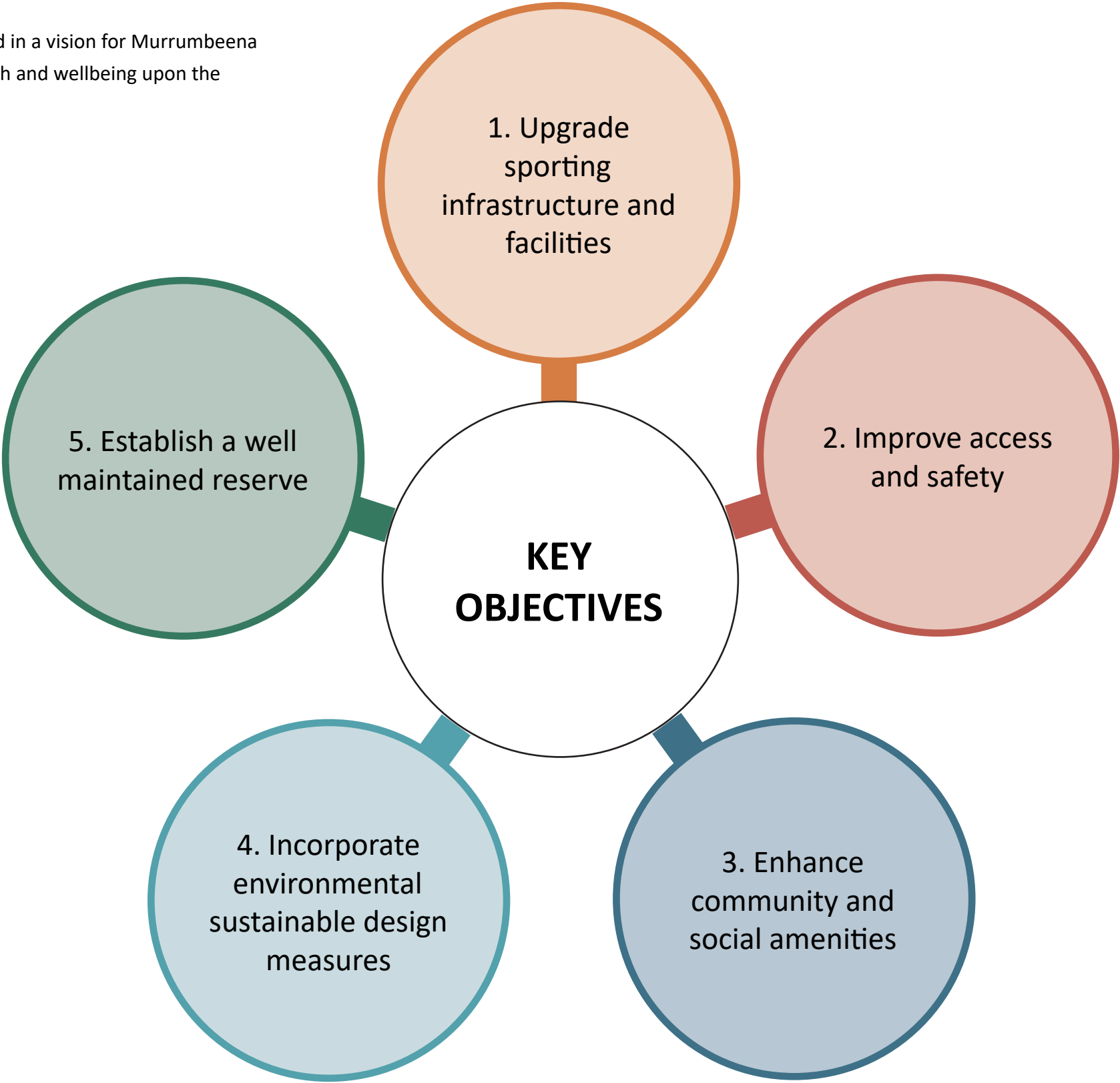
- CATERING
- CHANGE ROOMS
- ACCESS/ CIRCULATION
- AMENITIES
- SERVICES/ STORAGE
- PROGRAM/ MEETING ROOM
- SPORTS AREAS



Murrumbeena Park existing picnic area. Image: Steven Pam.

Chapter 4: MASTER PLAN

The site analysis work undertaken has resulted in a vision for Murrumbeena Park which seeks to improve community health and wellbeing upon the delivery of five key objectives:





- 1

Gerald Street Entrance:
 - Improve the entrance for pedestrians
 - Retain maintenance access
 - New car park entrance
- 2

New Car Park:
 - 60 car parking spaces inclusive of four accessible parking bays
 - Roundabout and drop off zone near the Community Hub Building
 - Incorporate tree planting bays. Relocate existing palms to highlight entrances and vistas
 - Incorporate water sensitive urban design elements/initiatives to purify stormwater runoff from the road surface before it enters Council drains
 - Re-use site bluestone pitchers and red bricks in car park construction
 - Maintain access to the bowling greens double access gates for refurbishment and maintenance works
- 3

New Community Hub:
 - Replace the existing pavilion with a New Community Hub for use by sporting clubs and the general community
 - Create a welcoming plaza entrance to the Community Hub with feature paving, lighting and seating, including spectator areas facing the main sports oval
- 4

Multi-Play Area:
 - Replace the existing car park with a play zone which may include a multi-purpose play court and social gathering spaces
 - Provide additional picnic facilities to disperse picnicking activities within the park
- 5

Dog Off-Leash Area:
 - Enhance dog off-leash areas with additional drink fountains incorporating dog bowls, seating and outdoor furniture, dog litter bag dispensers and additional shade trees
 - Upgrade picnic facilities
 - Maintain dog off-leash area to junior oval in out of club use times.
- 6

Kangaroo Road Entrances:
 - Improve the entrances for pedestrians
 - Retain maintenance access opposite Spark Street
 - Replace the existing park perimeter fence with a visually recessive fence

- 7

Bute Street Entrance
 - Improve the entrances for pedestrians
 - Retain maintenance access
 - Replace vehicle exclusion kerb blocks with a visually recessive fence
 - Provide turnabout circle for garbage collection and drop offs to multi-play area
- 8

Erindale Street Entrance:
 - Remove overgrown canopy vegetation and replace with low level shrubs and vertical planting along fences
 - Introduce safety lighting to illuminate pathways at night
 - Seek approval from Melbourne Water for any development works within the laneway due to major infrastructure located underground
- 9

Cricket Practice and Training Facility:
 - Replace the cricket nets with a fully enclosed Multi-purpose Training Facility suitable for cricket training and other sporting codes such as netball, futsal, hockey and others
 - Remove the existing rotunda
- 10

Main Oval Enhancement:
 - Replace the existing scoreboard with an electronic scoreboard (club funded only)
- 11

Junior Oval Enhancement:
 - Spectator shelters to replace the existing rotunda
 - New accessible public toilet and barbecue facilities
- 12

Playspace Enhancement:
 - Upgrade the capacity of the public restroom
 - Review playspace performance and replace play equipment as needed
- 13

Fitness Station:
 - Provide fitness stations along the northern and southern side of the park
- 14

Pedestrian Pathways:
 - Reconstruct gravel paths of a consistent width and ensure pathways are well compacted for all abilities access, walkers and joggers
 - Provide energy efficient pedestrian safety lighting around the park
- 15

Pedestrian Crossings:
 - Investigate safe pedestrian crossing of Kangaroo Road



Example of a pavilion plaza.



Example of a multi-play area.



Example of a formalised entry.



Example of tree planting in grass.



Master Plan Goals/Actions - Objective 1

The five key objectives, identified through the site analysis and consultation phase of the project, have been elaborated on in the following tables detailing goals for each with actions and strategies that can be implemented to achieve them.

Objective 1: Upgrade Sporting Infrastructure and Facilities			
Our Goal	Action No.	Action/Strategies	Priority
Provide a new community hub for use by sporting clubs and community groups	1.1	Remove the existing pavilion as the facility is run down, aged and unable to be expanded upon to meet modern day expectations, particularly in response to increased female and all-abilities participation in sport. Construct a new accessible Community Hub to be shared primarily by the cricket and football clubs, and Council services, with additional change rooms, meeting rooms, social rooms, kitchens and storage. The Hub would also be available to community groups with meetings rooms, other communal facilities, and an accessible public toilet facility attached to this building to service increased community use. The Hub will be skirted with spectator viewing areas and potential terracing including an entry plaza from the main car park on the west side.	High
	1.2	Remove the existing public toilet building and basketball key to facilitate the construction of the Hub building.	High
Provide a new cricket practice and multi-purpose training facility for sporting clubs and the community	1.3	Remove the existing practice cricket nets at the end of their useful life and replace with a new enclosed multi-purpose training facility orientated north-south. Partition draw back netting would be integrated into the design to make the facility flexible for training and casual public use for sporting codes such as netball, futsal, hockey and others. The existing rotunda will be removed.	Medium
	1.4	Remove the existing timber clad scoreboard and replace with an electronic scoreboard to the Main Oval in the same location. Electronic scoreboards are fully funded by clubs.	Low
Improve the provision of sport facilities to the Junior Oval	1.5	Provide new spectator shelters to replace the rotunda. Provide new barbecue facilities.	Medium



1.3 Example of enclosed cricket nets.



1.4 Example of an electronic scoreboard.



1.5 Example of a spectator shelter.



Master Plan Goals/Actions - Objective 2

Objective 2: Improve Access and Safety			
Our Goal	Action No.	Action/Strategies	Priority
Improve connectivity throughout the park	2.1	Reconstruct gravel paths of a consistent width and ensure pathways are well compacted for all abilities access, walkers and joggers. New paths will be typically 2.5 metres wide.	High
	2.2	Create park entrances comprising park identification signs, garden bed displays, feature paving, casual seating and directional wayfinding signage which point to nearby shops, train stations and shared path trails within reasonable walking distance.	High
Improve park perimeter fencing	2.3	Replace the chain mesh fence along Kangaroo Road. The new fence should be customised and visually recessive.	Low
	2.4	Remove all existing vehicle exclusion barriers and kerb plinth blocks at Gerald and Bute Streets. Replace with the same visually recessive fence proposed at Kangaroo Road to maintain consistency in style.	High
Improve safety within the park at night	2.5	Remove aged lighting. Provide new park lighting along pathways to improve safety around the park. These should be LED or solar powered post mounted lights for maximum efficiency and coverage. Ensure light spill to adjoining residents is avoided.	Low
	2.6	Remove overgrown trees and vegetation along the narrow laneway connection from Erindale Street and replace with low level shrubs. Introduce bollard lights (or a similar alternative) to assist with wayfinding and path illumination. Seek approval from Melbourne Water regarding improvement works as the laneway is an overland flow path.	Low
	2.7	Maintain clear sightlines throughout the reserve using high canopy trees and low shrubs incorporating Crime Prevention Through Environmental Design (CPTED) Principles.	High
Provide a new efficient car park	2.8	Construct a new car park accessible from Gerald Street to accommodate 60 parking bays inclusive of four accessible parking bays. The car park design shall feature a roundabout/drop off zone near the new Community Hub Building. Tree planting bays incorporating the transplanting of existing palms should be incorporated. Consideration should also be given to repurposing bluestone pitchers and red bricks currently in the park for kerb and channelling works.	High
Improve accessing opportunities of Kangaroo Road	2.9	Investigate safe crossing opportunities of Kangaroo Road at the south-east and central entry locations to the park. Safe crossings may include additional refuge islands central to the road or reducing speed limits to 40km/hr. Consultation with Vicroads will be required.	High
Maintain access to sporting facilities	2.10	Retain access to bowling green double maintenance gates. Introduce parking restrictions to provide access as agreed to between Council and the bowls club.	High
	2.11	Provide a turnabout circle for garbage collection and drop offs to the multi-play areas and bowls club.	High



2.1 Example of a concrete shared path.



2.4 Example of a visually recessive park perimeter fence.



2.7 Example of bollard lights.



2.9 Example of a car park drop randabout/drop off zone.



Objective 3: Enhance Community and Social Amenities			
Our Goal	Action No.	Action/Strategies	Priority
Provide Multipurpose Play Area	3.1	Remove the existing car park and provide a play zone which may include a multipurpose play court for basketball, netball and outdoor table tennis, as well as social gathering spaces which facilitate group seating and spectating opportunities. Investigate the opportunity for Free WIFI to extend out to this zone through the construction of the new Community Hub Building.	High
Provide social gatherings areas	3.2	Provide additional picnic facilities comprising the re-location of existing park shelters, picnic tables, bike rails, bin enclosures and potentially new electric barbecues and drink fountains.	Medium
	3.3	Provide a plaza forecourt to the new community hub building to welcome arrivals and provide break-out spaces for patrons and groups. The plaza will be furnished with seating and a number of transplanted Canary Island Palms from site to accent this zone.	High
Incorporate fitness stations	3.4	Incorporate fitness stations along pathways/circuits to promote intergenerational health and fitness usable by all members of the community including the elderly. Two fitness stations should be located in the park: one near the proposed cricket practice nets/multipurpose training facility and the second near the existing playspace.	High
Enhance the dog off leash area	3.5	Provide shaded respite areas for dogs and dog owners including seating, picnic tables, drink fountains with dog bowls, dog litter bag dispensers and shaded canopy trees. Re-use and relocate an existing park shelter.	High
Provide additional public restrooms	3.6	Consider increasing the amount of restrooms at the playspace given its popularity and intensive use.	Low
	3.7	Provide an accessible public toilet to the Junior Oval.	Low



3.2 Example of a picnic area.



3.3 Example of a plaza forecourt.



3.4 Example of a fitness station.



3.1 Example of multipurpose play areas.



3.1 Example of social gathering spaces.



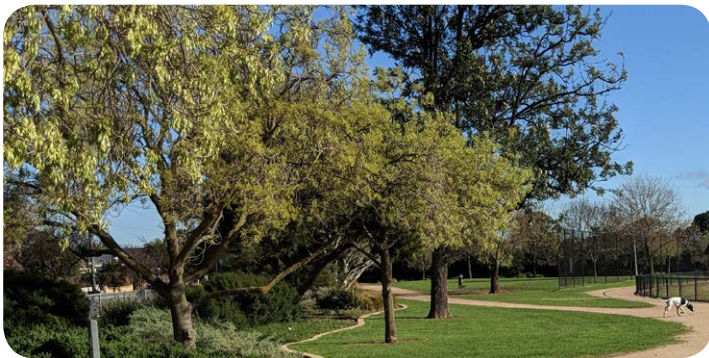
Objective 4: Incorporate Environmental Sustainable Design Measures			
Our Goal	Action No.	Action/Strategies	Priority
Consider water sensitive urban design initiatives	4.1	Investigate the inclusion of rain gardens and vegetation swales within the existing and new car parking areas in order to reduce nutrient loads and suspended solids entering the stormwater systems.	High
	4.2	Capture rainwater from the new Community Hub Building for internal toilet flushing and landscape irrigation use.	High
	4.3	Use hardy, drought tolerant, water wise plantings to minimise long term irrigation needs.	Ongoing
Enhance tree coverage on site	4.4	Provide additional high canopy trees to provide shade in summer and reduce the effect of urban heat. Conversely, trees should also be selected to permit winter sunlight and frame activity zones.	Ongoing
Reuse/recycle site materials	4.5	Salvage bluestone pitchers and red bricks from paving demolition works and re-use on site where possible.	High



4.1 Example of a vegetation swale.



4.3 Example of hardy plants.



4.4 Existing high canopy trees.



4.5 Existing bluestone pitchers and red bricks to be salvaged.



Objective 5: Establish a Well Maintained Reserve			
Our Goal	Action No.	Action/Strategies	Priority
Reduce litter dumping in the park	5.1	Provide an even distribution of litter bins around the park, particularly along pathways, at entry points and social gathering spaces. Ensure the placement of bins is undertaken in conjunction with rubbish collection contractors.	High
Provide maintenance access to all parts of the park	5.2	Retain park maintenance access at Bute Street, Kangaroo Road and Gerald Street. Provide new maintenance gates at Bute and Gerald Street.	High
Use easily obtainable, replaceable and longer lasting landscape materials for use within the park	5.3	Consider the use of materials which have a longer life span such as renewable and recyclables. Generally use landscape products and supplies sourced locally to sustain and enhance the local economy.	Ongoing



5.2 Existing park maintenance access at Bute Street.



5.2 Existing park maintenance access at Kangaroo Road.



5.2 Existing park maintenance access at Kangaroo Road.



5.2 Existing park maintenance access at Gerald Street.



Existing scoreboard for the sports oval at Murrumbidgee Park. Image: ACLA.

Chapter 5: Appendices

Council Strategies and Plans

A number of existing planning documents, policies and strategies are relevant to the Murrumbeena Park Master Plan.

A Walking Community 2014-2017

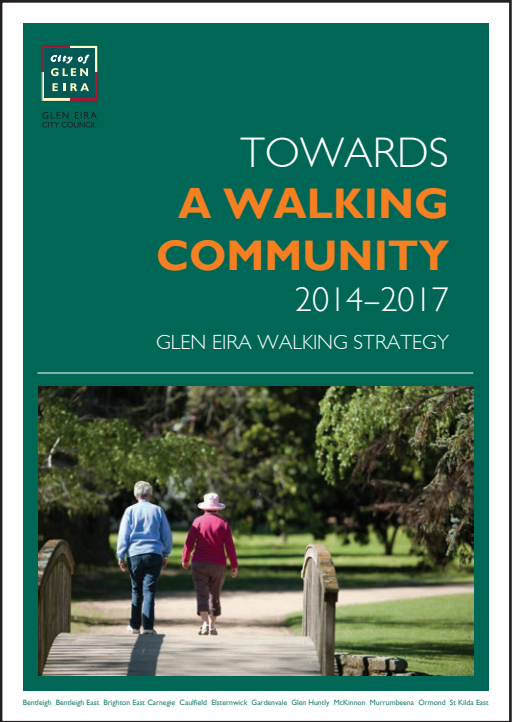
Glen Eira City Council’s walking strategy; *Towards a Walking Community 2014-2017*, aims to promote and facilitate walking as a transportation mode and health benefit and to improve the environment for walking prosperity. In this strategy walking is recognised as a way to increase surveillance, develop a sense of community, promote individual awareness of the local area, reduce motorised traffic on roads, reduce greenhouse gas emissions, and reduce individual car-related costs.

The strategy identifies the opportunity to improve the walking mentality in Glen Eira and the need to reduce pedestrian and vehicle collisions and increase pedestrian safety. It also explains the benefits of walking for religious groups and people with disability.

It’s noted that Glen Eira have successfully implemented a range of walking infrastructure initiatives however there is still a significant barrier of crossing busy roads. The strategy pinpoints a moderate priority location for an improved road crossing at the south-eastern corner of Murrumbeena Park on Kangaroo Road.

Also included is an action plan which identifies sixteen objectives. Those relevant to Murrumbeena Park are:

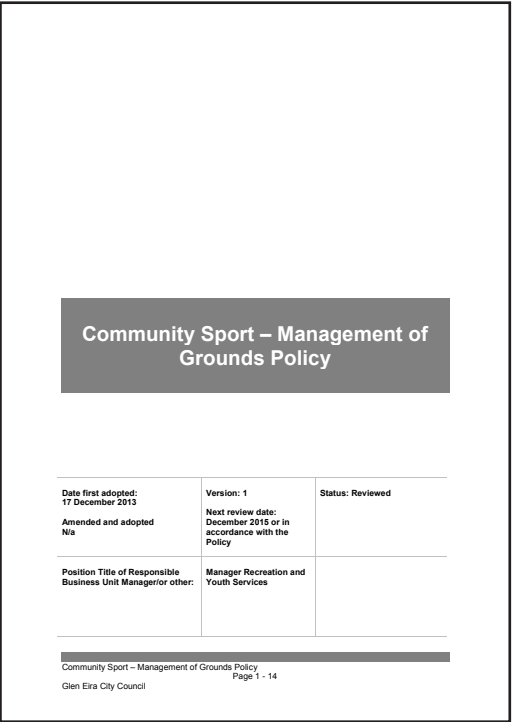
- The development of walking routes;
- The reduction of barriers caused by main roads;
- Improve pedestrian wayfinding;
- Improve pedestrian safety on shared paths;
- Promote Crime Prevention Through Environmental Design (CPTED); and
- Improve pedestrian safety in the vicinity of parks/reserves.



Community Sport - Management of Grounds Policy

The *Community Sport – Management of Grounds Policy* is a concise document which outlines policy relating to sports grounds and pavilions and their allocated use by clubs. The *Policy* acknowledges the popularity of organised sport within Glen Eira and the common use of designating ovals as dog off-leash areas when they’re not being used. It has also identified that some Council facilities which have not been redeveloped, improved or upgraded recently do not cater for equality of access. This is important in the context of any sport pavilion upgrades at Murrumbeena Park.

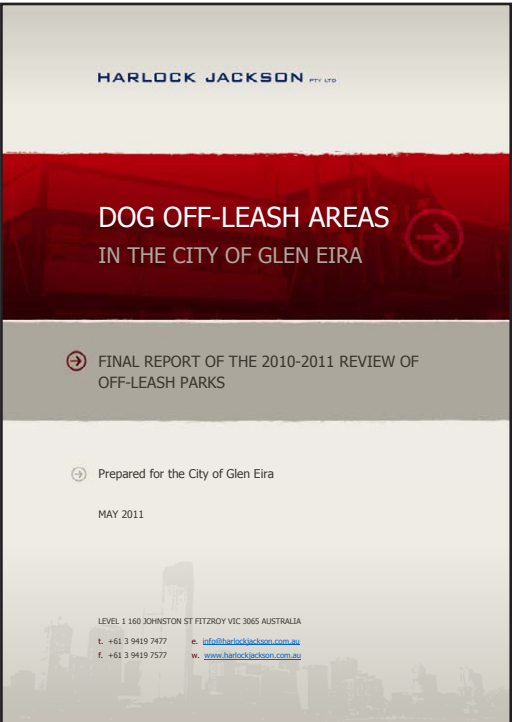
In efforts to increase capacity of individual grounds for active and passive use Council will convert to warm season grasses, sub-surface irrigation, improve drainage, perform other turf management practices, and install training lights and related measures. The document also reiterates the Victorian Code of Conduct for Sport and Equal Opportunities Act 2013 which embodies respect and inclusion.



Dog Off-Leash Areas Report 2010-2011

The *Dog Off-Leash Areas Report 2010-2011* is the comprehensive review of all dog off-leash areas in Glen Eira. In summary, the reviewed areas are considered appropriate with no specific recommendations for Murrumbeena Parks designated dog –off leash areas.

The *Report* does however mention issues with dog off-leash areas on sports grounds namely limited availability, damage to sports grounds, dog faeces, and dogs being exercised during training or matches. It’s recommended that dogs are not allowed on sports grounds with higher grades of turf cricket, and increased signage, education and enforcement of other behaviours is delivered.



Disability Action Plan 2017-2021

The *Disability Action Plan 2017-2021* guides Council’s efforts to support people with disabilities by adopting a whole-of-Council approach to responding to priority issues and promoting four themes of action. The *Plan* is underpinned by a commitment of access for all in Glen Eira which embodies recognition, support and inclusion. The *Plan* recognizes Council’s role as one which provides and plans for accessible and welcoming services, facilities and activities by addressing barriers created by attitudes, practices and structures.

The *Plan* also proposes four themes to guide future planning. These are:

- 1. Promote inclusion and participation;
- 2. Increase awareness and help shape community attitudes;
- 3. Create accessible places, spaces and services; and
- 4. Enhance opportunities for participation in civic life.

Themes relevant to Murrumbeena Park are:

- More opportunities for social connections, involvement and inclusions;
- Accessible buildings, shops, facilities, amenities and transport; and
- More designated accessible parking and better monitoring of designated accessible parking.



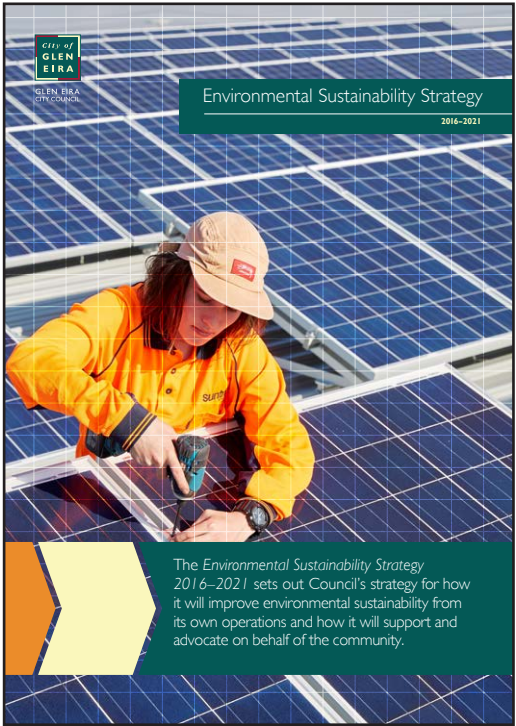
Environmental Sustainability Strategy 2016-2021

The *Environmental Sustainability Strategy 2016-2021* assigns Council's improvements towards environmental sustainability into themed objectives. Capturing relevant federal government environment policy this Strategy reiterates:

- The Environment Protection and Biodiversity Conservation Act. 1999 – protect and manage nationally and internationally important flora, fauna, ecological communities and heritage places.
- The National Construction Code 2015 – minimum requirements for the design, construction and performance of buildings throughout Australia.
- The national greenhouse gas emissions reduction target to reduce emissions by 26 to 28 per cent below 2005 levels by 2030.
- The Renewable Energy Target Scheme which stimulates the renewable energy market including wind power and solar power.

Glen Eira’s vision of achieving a healthy environment is divided into four themes; climate change, recycling and waste, biodiversity, and water. Of the four objectives, key recommendations most relevant to Murrumbeena Park are:

- ***The adaptation of Council managed open, infrastructure and services over time to cope with climate change*** - considering stormwater flows and incorporation of features to minimise the urban heat island effect in the design of buildings, streetscapes and open space.
- ***Reduced use of new material in Council operations*** – reviewing options to reduce and reuse materials, furniture and supplies by Council, and continue to require recycling of building waste during construction projects.
- ***Protect and Enhance biodiversity and environmental heritage on Council managed land*** - enhance areas of remnant vegetation and other native plant communities and trees, explore practical management of increasing diversity of insects and habitats within some open spaces, incorporate natural features and natural heritage during the design of buildings and masterplans, and manage Councils tree population.
- ***Increase efficiency of Council’s water use*** – when updating irrigation systems and sportsgrounds, consider cost-effective opportunities to reduce potable water use.
- ***Increase the amount of rainwater and stormwater Council captures or treats for use in parks, buildings or for trees*** – during infrastructure planning and design, introduce features to reduce water use and reduce pollution flows into Port Phillip Bay.
- ***Ensure green infrastructure can survive drought*** – use drought tolerant trees and plants in the majority of plantings.

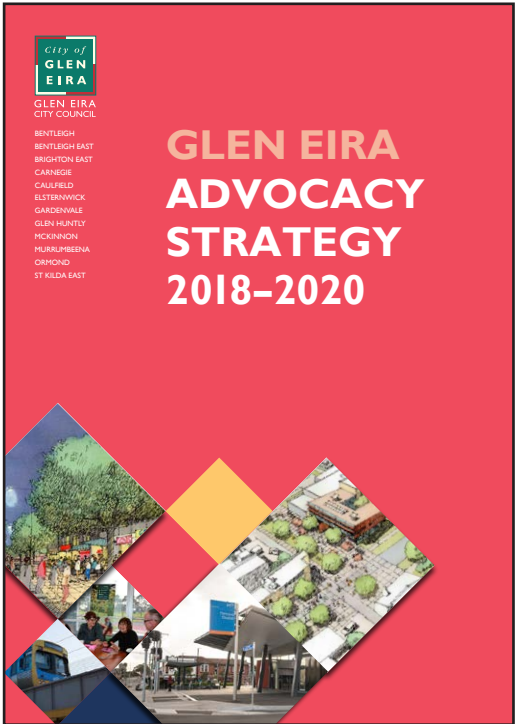


Glen Eira Advocacy Strategy 2018-2020

The *Glen Eira Advocacy Strategy 2018-2020* ensures the continual development of Glen Eira City Council to be a place where people want to live now and in the future. Advocacy requests are grouped into six areas:

- 1. Vibrant community hubs and precincts,
- 2. Efficient transport,
- 3. Additional open space,
- 4. A safer community and reduced incidence of family violence,
- 5. A sustainable city, and
- 6. Affordable housing.

The redevelopment of Murrumbeena Park is showcased as part of this *Strategy* as an effort to meet the needs of the growing Glen Eira population. The redevelopment of Murrumbeena Park is to include a new multi-use pavilion, improved walkability connections to transport, shops and local schools, and a new larger circuit walk within the park.



Glen Eira Bicycle Strategy 2010

The *Glen Eira Bicycle Strategy* recognises cycling as a mode of transport which increases physical activity, reduces carbon footprint, produces more vibrant communities, has costs savings and decreases traffic congestion. After anticipation of an increase in cycling in Glen Eira the *Strategy* provides Council with cycling trends, issues, recommendations, and a subsequent action plan.

The *Strategy* identifies a range of cyclists comprising school children, recreational, commuter, utility, touring, and sporting cyclists, and the need for some to have off-road paths and low traffic cycling routes such as those provided by parks. Off-road cycling routes also alleviate road congestion and reduce risk of cyclist and vehicle collisions.

Objectives of the *Strategy* are:

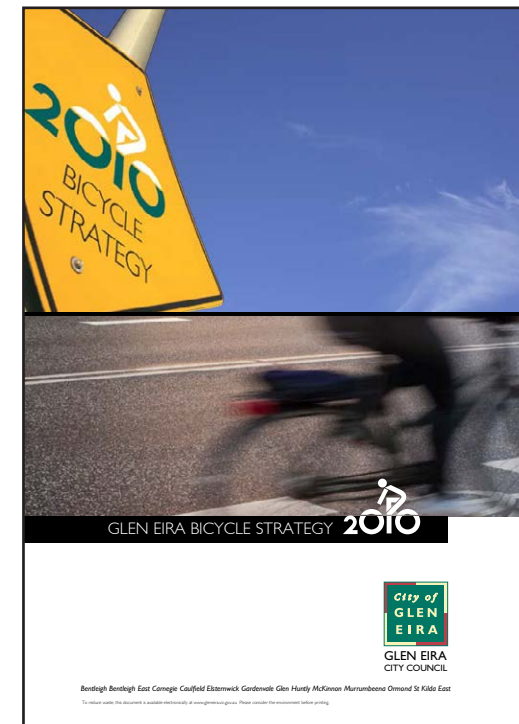
- Identify current provision of cycling facilities;
- Further develop bicycle network links to activity centres, transport and open space;
- Encourage cycling as an alternative form of transport and physical activity;
- Identify cycling needs and barriers to participation, identify best practice design that Council should adopt for bicycle facilities; and
- Present a detailed prioritised action plan.

Pertinently, the *Strategy* identifies a number of priorities relevant to Murrumbeena Park:

1. High priority for the installation of bike lanes along Kangaroo Road;
2. Moderate priority for the installation of new bike lanes along the entire length of Poath Road;
3. Moderate priority for bike lane and crossing improvements along Murrumbeena Road.

Additional recommendations include:

1. The installation and upgrade of bike parking at key destinations;
2. Modifications to existing kerb ramps on entrance/exit to shared paths; and
3. The construction of concrete off-road paths at least 2.5m wide with adequate path symbols and signage.



Glen Eira Council and Community Plan 2017-2021

The *Glen Eira Council and Community Plan 2017-2021* outlines themes which promote a liveable, accessible, safe, sustainable and engaged community, and states 2018-2019 Council commitments relative to those themes.

The five themes and summaries of commitments are:

- **Liveable and Well Designed: A well planned city that is a great place to be**
Council commits to addressing development, open space, business and transport, including upgrades to municipal strategies and quality guidelines.
- **Accessible and Well Connected: A city that is easy to move around, with safe travel options and walkable neighbourhoods**
Council commits to pilot projects which implement the *Integrated Transport Strategy* with a focus on creating safer and walkable neighbourhoods. This includes the construction of new footpaths, updated actions plan for walking and cycling, and a new car parking policy. Also, upgrade works to Neerim Road, Murrumbeena, with the Level Crossing Authority will be initiated.
- **Safe, Healthy and Inclusive: A strong and safe community that bring people together and enhances health and wellbeing**
Council commits to the development of a youth strategy, a family violence action plan, and the delivery of key activities supporting crime prevention. Also, the implementation of all-abilities access across the municipality, enhanced volunteering opportunities, Moorleigh Village community gardens and community shed, and Bentleigh library and youth hub.
- **Clean and Sustainable: An attractive and sustainable environment for future generations**
Council commits to the continued implementation of the *Open Space Strategy 2013-2026*, including open space projects, sustainable building measures, energy efficient street lighting on Council’s major roads, and the protection of valued trees.
- **Informed and Engaged: A well governed Council that is committed to transparency and engages residents in decision-making**
Council commits to the implementation of the *Community Engagement Strategy 2018-2021*, with improved online options for transactions and streamlined processes for community engagement with Council. Also, increased transparency and available information with quarterly reports to community on Council progress with this Plan’s commitments.



Integrated Transport Strategy 2018-2031

The *Integrated Transport Strategy* sets out Council's priorities for Glen Eira's transport. This *Strategy* provides a planning policy link between the *Glen Eira Council and Community Plan 2017-2021* and State Government's *Plan Melbourne*, and has replaced the Council's existing *Sustainable Transport Strategy*, *Walking Strategy* and *Cycling Strategy*.

The *Integrated Transport Strategy* strives for a 50:50 mode share of car and non-car trips by 2031 by aiming to transition 980 car commuters to other modes of transport every year for the next 13 years.

It is envisioned that:

"Glen Eira will be a City of child friendly neighbourhoods that are connected to a network of vibrant and well-designed walkable activity centres. The community will have a range of travel options to service their daily needs. This *Strategy* aims to reduce car use to 50 percent of all trips."

In order to provide a framework for this document, four premium transit corridors have been developed and current key transport routes and potential improvements outlined for each. The four transit corridors are:

1. Efficient driving routes;
2. Express public transport routes;
3. Safe cycling streets; and
4. Great walking and shopping streets.

Additionally, spaces between transit corridors are identified as "places". Three place types have been developed and key objectives, elements, and design solutions identified for each. These are:

5. Child friendly neighbourhoods;
6. Safe school zones; and
7. Walkable activity centres

Conclusively, a range of policies, pilot programs and projects are identified and aim to move toward a better transport system that will reduce traffic congestion and parking issues. Also, advocacy projects are outlined for light rail, a new premium bus service in East Bentleigh, premium cycling infrastructure along key arterial roads, and Caulfield station upgrade and level crossing removals.

One project relevant to Murrumbeena Park is the development of a bicycle action plan which will audit and improve bike parking facilities in key destinations including parks.



Murrumbeena Park Community Hub Vision Flyer

The *Murrumbeena Park Community Hub Vision* is a brief publication for the community to illustrate Council’s intentions to upgrade the pavilion and community hub at Murrumbeena Park.

The flyer introduced Murrumbeena Park as:

“...a place for recreation for the local community for more than 100 years... It provides the foundation on which a strong, connected and vibrant community has been built, making it a vital part of the community where people of all ages connect, play and grow... it has potential to provide much more than just sport and recreation.”

To meet the needs of the growing community, Glen Eira City Council has a vision to include a multipurpose community hub, opportunities for events, festivals and community gatherings, improved walkability and connections, enhanced local streetscapes, a multi-purpose sports area, and connected pathways around the park. The vision aims to provide spaces and services for everyone, socially connect and support residents, promote a healthier and more active community, and build community capital.



Open Space Strategy 2014

The *Open Space Strategy 2014* is a comprehensive document which guides the future planning, provision, design and management of public open space in Glen Eira from 2013 to 2026, as well as analyses open space needs of the existing community and anticipates open space needs for the growing population.

Key values of open space in Glen Eira are deemed to be trees, the quality of existing municipal open spaces including sport and recreation facilities, open space in which to visit and relax, the variety of open space, excellent maintenance levels in open space, and high satisfaction with play facilities. Meanwhile, key issues associated with open space in the municipality are the lack of open space, the impact of population growth on open space accessibility, a balance between sport, unstructured recreation and informal use, the need to protect existing trees, the lack of diversity of open space, the need to improve sustainable design, and the need to improve all-abilities access to and within open space.

The *Strategy* ultimately aims to lead Council toward equitable, accessible, adaptable, networked, diverse, and sustainable open spaces to contribute to overall liveability and character in Glen Eira.

The *Strategy* conducted a community survey and identified the most popular facilities. These are walking paths, seats, open grassed areas, drinking fountains, public toilets and playgrounds. However, facilities not adequately provided for are drinking fountains, seats, public toilets, cycle paths, walking paths and picnic tables. The survey also identified resident’s desire for increased biodiversity in parks through additional trees, water/wetlands, garden beds and open grass areas.

Murrumbeena contributes 8.1% of total open space to Glen Eira City Council, ranking one of the highest in the municipality. As Murrumbeena Park is identified to be a municipal open space type it is suggested to have barbecues, car parking, dog off-leash areas, drinking taps, major/minor festival events, garden beds, lighting, open grass areas for informal use, pedestrian and shared paths, a medium to large playground, rubbish bins, seating, shelters, skate/BMX facilities, structured sport and recreation facilities, toilets, large canopy trees, unstructured recreation facilities, water features/wetlands, WSUD infrastructure and sustainable water supply. Murrumbeena is most popularly visited for walking, dog walking, playground use, dog off-leash areas and exercising.



Pavilion Redevelopment Strategy 2017

The *Pavilion Redevelopment Strategy 2017* outlines the importance of sporting pavilions to benefit and be usable by the whole community and provides Council with a clear framework for prioritising investment. Pavilion functionality is considered as well as particular criteria for pavilion usage and capacity.

Traditionally sporting pavilions facilitate organised sports and club based activity however they are evolving into community hubs which offer a wider range of organised and casual use. Multi-purpose pavilions can connect communities through programs and events which can co-exist with sporting clubs and collaboratively enhance local identity.

The *Strategy* employs the exploration of opportunities beyond sport such as:

- The ability to cater for community groups and casual users;
- Opportunity to integrate and support external uses in open space;
- Co-locating Council services;
- Complementary commercial activities; and
- Partnerships with educational or other government agencies.

In a priority list which ranks Glen Eira pavilions from 1-20, 1 having the highest priority for redevelopment, Murrumbeena Park Pavilion is ranked number 2.



Pedestrian Access Strategy 2010

The *Pedestrian Access Strategy 2010* sets out the Victorian Government's vision for a more pedestrian-friendly transport system and addresses ways the Victorian State Government can partner with local municipalities to promote walking.

The *Strategy* promotes walking as a way to ease congestion, reduce greenhouse gas emissions, improve the health of Victorians and promote social connections, however, physical and attitudinal barriers stop people from walking.

In an effort to stimulate walking, the *Strategy* focusses on:

1. Encouraging people to walk by changing attitudes and behaviour;
2. Collaborating to improve provision for walking;
3. Creating pedestrian-friendly built environments, streets and public spaces;
4. Increasing the safety of walking; and
5. Continuing to integrate walking with other transport systems.

The *Strategy* also recognises the importance of good pedestrian access. 'Walking' is considered to be the means of reaching a destination by foot, wheelchair, motorised or non-motorised scooter and wheeled devices such as skates and skateboards. These forms of transportation should be a viable first choice option of transport for short trips and a component of longer trips and should be considered in all urban planning, land use and transport development.

Main reasons limiting people from walking are:

- Nowhere to cross;
- The path suddenly ends;
- Difficulty finding your way;
- It seems unsafe;
- Nobody else walks;
- There is nothing to walk to;
- There is no shelter from the elements;
- Walking seems like hard work; and
- It seems to take a really long time.





